

PLATINUM SERIES

GEMINI ExE

- | | | | | | | | | | | |
|------------------|------------|-------------------|-----------------------------|-------------------------------|-------------------------------|-----------------------------|----------------------------------|------------------------------------|----------------------|-----------|
| | | | | | | | | | | |
| PESO SUPPORTATO | ExE POCKET | NO ROLLING SYSTEM | AQUACELL MASSAGE (2 LAYERS) | MICROCLIMATE ECOSILVER FABRIC | TRIO SYSTEM CLIMATECH FILLING | BREATHABLE LUXURY SIDE BAND | NOT SUITABLE FOR RELAX BEDFRAMES | CERTIFIED MATTRESS SAFE FOR HEALTH | WATER WASHABLE COVER | HAND MADE |
| SUPPORTED WEIGHT | ExE POCKET | NO ROLLING SYSTEM | AQUACELL MASSAGE (2 LAYERS) | MICROCLIMATE ECOSILVER FABRIC | TRIO SYSTEM CLIMATECH FILLING | BREATHABLE LUXURY SIDE BAND | NOT SUITABLE FOR RELAX BEDFRAMES | CERTIFIED MATTRESS SAFE FOR HEALTH | WATER WASHABLE COVER | HAND MADE |



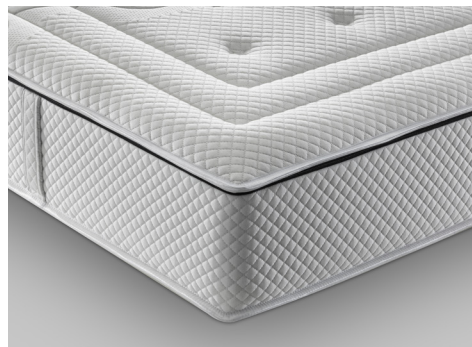
PORTANZA / FIRMNESS RATING

- R Rigido**
Ideale per persone di peso fino kg 110
Altezza totale del materasso: h cm 23/24 ca.
- R Firm**
Ideal for people weighing up to kg 110
Total mattress height: h approx. 23/24 cm

Progetto Foresta Morfeus
Il progetto "Foresta Morfeus", in collaborazione con Treedom, compensa le risorse e l'energia impiegate piantando alberi.

Foresta Morfeus (Morfeus Forest) project
The "Foresta Morfeus" project, in association with Treedom, offsets resources and energy used by planting trees.

PLUS



TOP COMFORT CON IMBOTTITURA Trio System Climatech alto spessore (sui due lati).

EXTRA THICK COMFORT TOP with Trio System Climatech filling (on both sides).



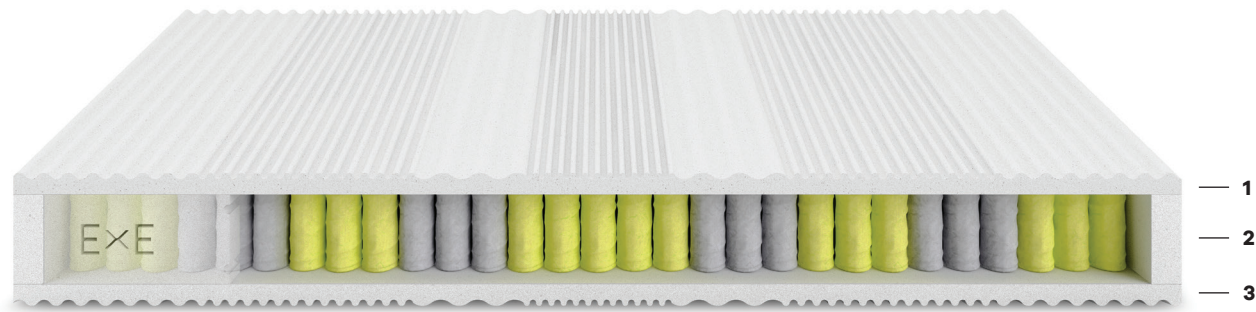
Imbottitura "Trio System Climatech": strati a portanza differenziata di Aquacell UltraSoft + imbottitura Climatech ecosostenibile (sui due lati).

"Trio System Climatech" filling: Aquacell UltraSoft different support layers + ecosustainable Climatech filling (on both sides).



ExE 1.2 POCKET: sostegno attivo, progressivo, bilanciato.

ExE 1.2 POCKET: active, progressive, balanced support.



STRUTTURA

1) Aquacell: strato di comfort ergonomico in Aquacell Green alta portanza profilo "massage" 5 zone.

2) Struttura ExE 1.2 Pocket: speciali molle in filo d'acciaio armonico patentato, insacchettate precomprese (circa 1000/1200 molle nel matrimoniale), 9 zone di portanza differenziata, a sostegno attivo, progressivo e perfettamente bilanciato sul corpo, dolce e delicato sulla pelle. Careatura perimetrale antiaffossamento "ExE Elast Box System".

3) Aquacell: strato di comfort ergonomico in Aquacell Green alta portanza profilo "massage" 5 zone.

Altezza totale del materasso: h cm 23/24 ca.

STRUCTURE

1) Aquacell: ergonomic Aquacell Green comfort layer, high firmness rating, with 5-zone "massage" profile.

2) ExE 1.2 Pocket structure: special patented harmonic steel wire springs, inserted pre-compressed (approx. 1000/1200 springs in the double mattress), with 9 differential support zones, with active, progressive and perfectly balanced support, that is soft and gentle on the skin. "ExE Elast Box System" outer anti-sag frame.

3) Aquacell: ergonomic Aquacell Green comfort layer, high firmness rating, with 5-zone "massage" profile.

Total mattress height: h approx. 23/24 cm

COVER

Top Comfort (two sides)

Tessuto MicroClimate EcoSilver: il tessuto bi-elastico double jersey MicroClimate EcoSilver (tecno-filato a base naturale in viscosa, derivata da pura cellulosa vegetale da piante a rapida crescita ottenuta con processo produttivo ecofriendly rispettoso dell'ambiente) ad imbottitura integrata, si modella perfettamente alla struttura esaltandone le caratteristiche di comfort e disperde istantaneamente l'umidità con garanzia di un microclima sempre controllato, fresco, sano ed asciutto. Il trattamento igienizzante a base naturale Silver lo rende anallergico ed antiacaro, dona freschezza alla pelle per la capacità riflettente dell'argento, protegge dalla polvere per le caratteristiche antistatiche dell'argento. Il trattamento a base naturale Silver è permanente per tutta la vita del materasso.

Imbottitura "Trio System KlimaTech": stratificata a modellazione e portanza progressiva in KlimaTech (esclusiva imbottitura in fibra anallergica, traspirante, rispettosa dell'ambiente perché prodotta con fibre vergini di recupero) in doppio strato + Aquacell UltraSoft (sui due lati).

Breeze3D: la struttura interna è protetta da rivestimento in tessuto traspirante 3D.

Fascia Luxury: realizzata con esclusivo tessuto Luxury accoppiato con tessuto traspirante 3D, maniglie imbottite.

Lavabilità: il rivestimento è sfoderabile e lavabile in acqua 30° C.

COVER

Comfort Top (two sides)

MicroClimate EcoSilver fabric: the Microclimate EcoSilver bi-elastic double jersey fabric (a technical yarn with a natural viscose base, derived from quick growing plants, and obtained in an ecofriendly production process) with integrated filling, perfectly fits the structure, enhancing its comfort, and immediately disperses moisture, guaranteeing a microclimate that is always controlled, fresh, healthy and dry. The natural Silver based sanitising treatment ensures anti-allergy, mite-proof properties, and the reflecting and anti-static properties of silver make skin feel fresh and protect from dust. The natural Silver based treatment is permanent, to last the entire lifetime of your mattress.

"Trio System KlimaTech" filling: modelled layering and gradual support in KlimaTech (the exclusive filling made from breathable, anti-allergy fibre, which is environmentally friendly as it is made from recycled virgin fibres) in a double layer + Aquacell UltraSoft (on both sides).

Breeze3D: the internal structure is protected with a cover in 3D breathable fabric.

Luxury side band: made from exclusive Luxury fabric paired with a breathable 3D inner fabric, padded handles.

Washability: the cover is removable and can be washed in water at 30° C.



Il tessuto MicroClimate EcoSilver, con trama in filato di pura cellulosa vegetale è ecofriendly, anallergico, antiacaro, termoregolatore, inodore, sicuro per la salute.

The Microclimate EcoSilver fabric with woven pure vegetable cellulose yarn is ecofriendly, anti-allergy, mite-proof, heat regulating, odourless and safe for health.



Fatto a mano con qualità sartoriale, rifiniture di pregio con pregiati nastri, maniglie e passamaneria in prezioso tessuto. Cover sfoderabile e lavabile in acqua a 30° C.

Handmade with sartorial quality, fine finishes with precious ribbons, handles and trimmings in precious fabric. The cover is removable and washable in water at 30° C.